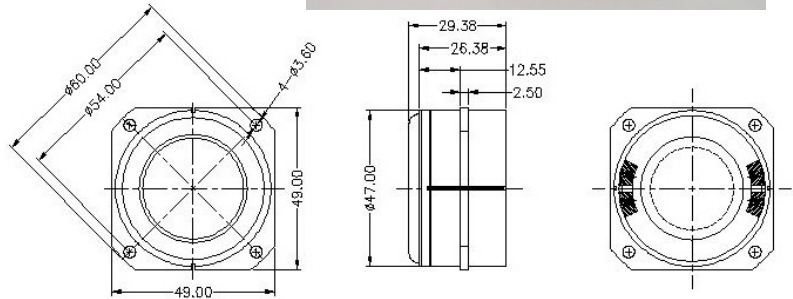


2 inch Extended Range Loudspeaker

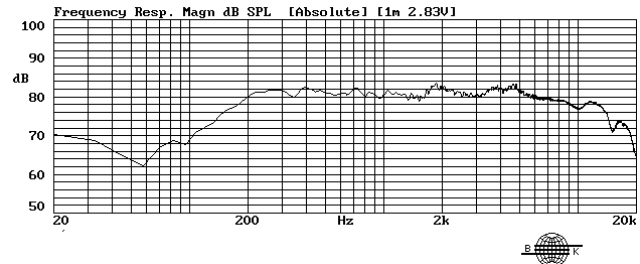


- **High Output Sensitivity**
- **Ultra Compact Design**
- **No Stray Magnetic Fields**

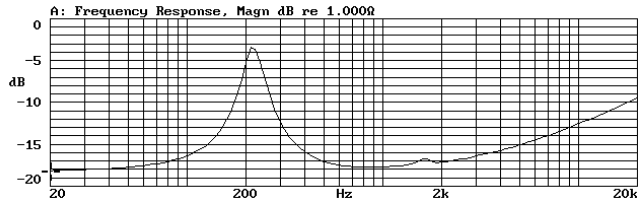
Nominal Diameter 2 inches (51 mm)
 Nominal Impedance (Z) 8 Ohms
 Sensitivity, 1W/1m (E) 84 dB @ 1 kHz
 Power Capacity, RMS (Pe) 15 W
 Power Capacity, Peak 60 W
 Frequency Range (-10dB) 250 - 15 kHz
 Minimum Impedance 8 ohms
 Voice Coil Diameter 32.6 mm
 Voice Coil Winding Length (h) 4.4 mm
 Voice Coil Number of Layers (n) 2
 Voice Coil Former Material Aluminum
 Voice Coil Wire Composition CCAW
 Magnetic Material Neodymium radial
 Stray Flux Shielding Inherent
 Magnetic Gap Depth (He) 8 mm
 Cone Material Titanium
 Surround Material Foam
 Polarity, Outward Motion Positive voltage on (+) tab
 Net Weight 113 g
 Maximum Excursion 10 mm peak to peak



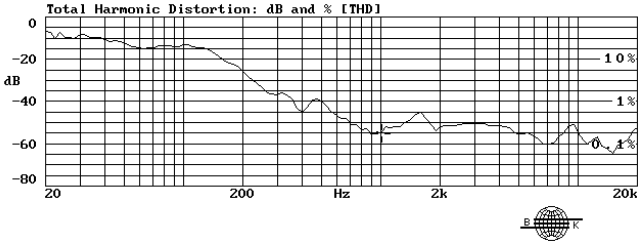
Frequency Response (1W, 1m)



Impedance



Distortion (1W,1m)



Thiele / Small Parameters

Resonant Frequency (Fo) - Fs 250 Hertz
 Voice Coil DC Resistance - Re 6.4 Ohms
 Total Q - Qts 0.68
 Mechanical Q - Qms 4.72
 Electrical Q - Qes 0.80
 Equivalent Volume of Air - Vas 0.1 L
 Radiating Piston Area - Sd 13.2 cm²
 Xmax 6 mm peak to peak

Electrical / Mechanical Parameters

Flux Density x Length - BL 3.5 Tesla-meters
 Compliance - Cms 390 μm/N
 Total Mass - Mms 1.04 grams