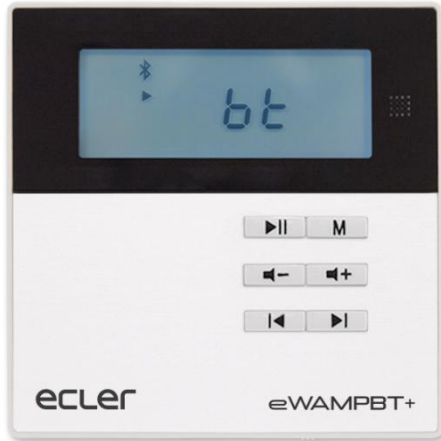




## eWAMPBT+

COMPACT AMPLIFIERS

*Stereo wall amplifier with media player and BT connection*



# USER MANUAL

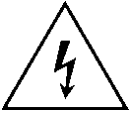
## TABLE OF CONTENTS

<b>1.</b>	<b>IMPORTANT SAFETY INSTRUCTIONS.....</b>	<b>3</b>
<b>2.</b>	<b>KEY FEATURES.....</b>	<b>6</b>
<b>3.</b>	<b>FRONT PANEL .....</b>	<b>7</b>
<b>4.</b>	<b>STARTUP.....</b>	<b>8</b>
	<i>4.1. FM.....</i>	<i>8</i>
	<i>4.2. SD.....</i>	<i>8</i>
	<i>4.3. USB.....</i>	<i>9</i>
	<i>4.4. BT CONNECTION .....</i>	<i>9</i>
	<i>4.5. AUX INPUT &amp; AUX OUTPUT .....</i>	<i>10</i>
<b>5.</b>	<b>MECHANICAL DIAGRAMS .....</b>	<b>10</b>
<b>6.</b>	<b>REMOTE CONTROL.....</b>	<b>11</b>
<b>7.</b>	<b>TECHNICAL SPECIFICATIONS .....</b>	<b>12</b>
<b>8.</b>	<b>REAR PANEL.....</b>	<b>13</b>
<b>9.</b>	<b>INSTALLATION .....</b>	<b>14</b>
<b>10.</b>	<b>PACKING LIST.....</b>	<b>15</b>

## 1. IMPORTANT SAFETY INSTRUCTIONS

- Read this instructions manual careful and follow all the indications and safety warnings.
- Keep the instructions manual in an easily accessible place for consulting at any time when needed.
- Do not handle the device or alter any of its parts, including the electrical connection, mechanical fastening and external structure.
- Keep the equipment away from sources of heat such as radiators, stoves or heaters.
- Do not install or store the equipment in damp environments or in places near to water.
- Do not insert any object of any kind through the ventilation grilles on the device housing nor through any opening that may contain the same. Failure to comply with these guidelines may lead to a high risk of electrocution.
- Make sure not to cover the openings for heat dissipation located in the metal body of the equipment. Also, avoid build up of dust on the same.
- Prior to connecting the equipment, check that the power supply input is in accordance with the voltage shown on the label.
- This device needs to be earthed. At all times, make sure to use the power supply cable supplied with the equipment and to always connect the jack into an earthed plug.
- Do not pull on the power supply cable to unplug it.
- Do not use, connect or disconnect the equipment with wet hands or feet.

- Immediately disconnect the equipment from the power supply in the event of noting any kind of breakdown or damage to the same that may be hazardous. Then contact the authorized technical service.
- Clean the equipment with a dry cloth or with neutral soap and a slightly damp cloth. Avoid using detergents, solvents or any other type of abrasive substance.
- Make sure that the equipment is disconnected from the power supply, or put the power in the off position before handling any of the inputs or outputs on the equipment.



**WARNING:** This symbol indicates risk of electric shock inside the device. Under no circumstance should the device be opened while powered up.



**WARNING:** This symbol indicates that precautions should be taken when handling and connecting the device. Observing certain indications in the instructions manual is required..



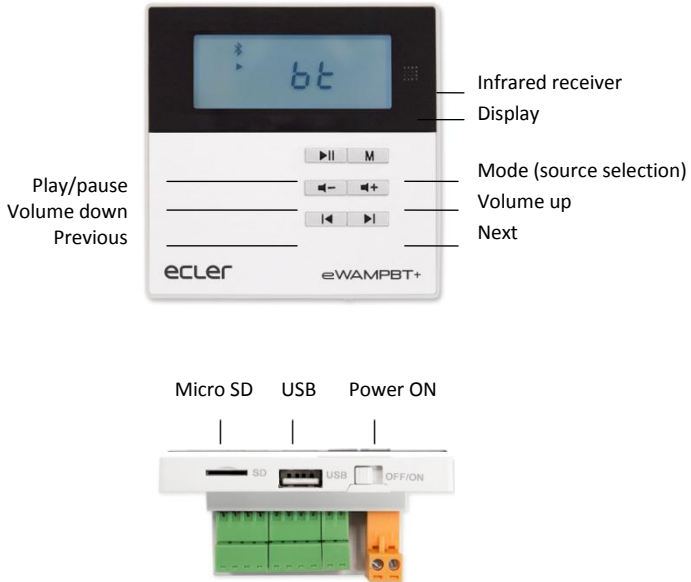
**WARNING:** This product must not be discarded, under any circumstance, as unsorted urban waste. Take to the nearest electrical and electronic waste treatment centre.

**NEEC AUDIO BARCELONA, S.L.** accepts no liability for any damage that may be caused to people, animal or objects due to failure to comply with the warnings above.

## 2. KEY FEATURES

- Built-in 2x10 WRMS high efficient amplifier @ 8 ohm (min. load)
- LED screen
- Multiple music connection modes, including FM, micro SD, USB, Bluetooth, AUX input and AUX output
- Supports MP3, WMA, WAV and FLAC
- Adjustable sensitivity of auxiliary input
- Stereo AUX output
- Can store up to 20 FM radio channels. Support automatic and manual search
- Wide voltage input, suitable for 100~240VAC, 50/60Hz
- Remote control included
- Surface-mount installation box included

## 3. FRONT PANEL



**WARNING:** connect the AC terminals to electrical mains supply before powering ON the device.

## 4. STARTUP

### 4.1. FM

Press **M** key to choose FM mode.

Automatic Search: long press ►|| to start the automatic channel search and the system will automatically save the available radio stations.

Manual tuning mode: long press ◀ or ▶ to enter the manual tuning mode; and then short press ◀ or ▶ to adjust the current channel. After no key operation within 5 seconds, it will save the current channel and leave manual tuning mode.

Mute: short press ►|| to mute FM playback.

Channel selection: short press ◀ or ▶ to navigate through saved channels.

Volume control: short press ◀+ or ◀- to increase or reduce the current volume.

### 4.2. SD

Press **M** key to choose SD mode. If there is no SD card, the display will show “NO” and flicker. If files are not supported or there are no files, the display will show “----”.

Play control: ►|| to play/pause. Short press ◀ or ▶ to navigate through songs. Long press to fast forward or fast reverse.

Volume control: short press ◀+ or ◀- to increase or reduce the current volume.



### 4.3. USB

Press **M** key to choose USB mode. If there is no USB device, the display will show “NO” and flicker. If files are not supported or there are no files, the display will show “----”.

Play control: ▶|| to play/pause. Short press ◀ or ▶ to navigate through songs. Long press to fast forward or fast reverse.

Volume control: short press ◀+ or ◀- to increase or reduce the current volume.

### 4.4. BT CONNECTION

Press **M** key to choose Bluetooth mode. If there is no connection, the display will show “BT” and flicker. When the device is connected successfully, “BT” will be always on. eWAMPBT+ is displayed in other devices as ECLERXXXXXXXXXX, where the last 9 digit numbers is the device’s serial number. The password can be found in the rear side label.

Play control: ▶|| to play/pause. Short press ◀ or ▶ to navigate through songs. Long press to fast forward or fast reverse.

Volume control: short press ◀+ or ◀- to increase or reduce the current volume.

## 4.5. AUX INPUT & AUX OUTPUT

Press **M** key to choose AUX1 input mode.

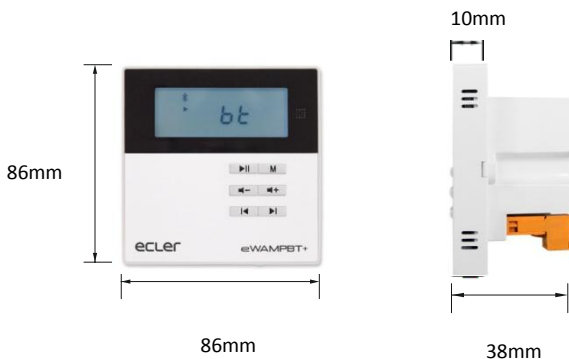
Play control: ►|| to play/mute. When it is muted, the display will flicker.

Sensitivity adjustment: long press ◀ or ▶ to select S1 or S2 sensitivity adjustment. S1: input and output 500mV; S2: input 1000mV, output 500mV)

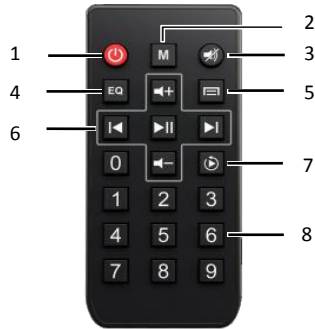
Volume control: short press ◀+ or ▶- to increase or reduce the current volume.

In addition, eWAMPBT+ features an aux audio output (**AUX OUTPUT**). This stereo audio signal is identical to the powered signal, but with LINE level (0dBV). Perfect to connecting an additional audio system like a self-powered sub-woofer for bass reinforcement.

## 5. MECHANICAL DIAGRAMS



## 6. REMOTE CONTROL



1. Standby
2. Mode selection (source selection)
3. Mute
4. Equalization mode selection
5. Menu (not available)
6. Transport & volume control
7. Play mode selection
8. Number keys. In SD mode allows to select a track number. In FM mode allows write the FM frequency.

## 7. TECHNICAL SPECIFICATIONS

### eWAMPBT+

---

Power input	100-240V
Output power	2x10 WRMS @ 8ohms
Minimum load	8 ohm
THD	≤0.03% (1KHz, 1W, 8Ω)
S/N ratio	>81dB
Frequency response	20Hz~20kHz
Sensitivity Aux input (adjustable)	AUX: 1V/500mV
Aux output	0dBV
Audio formats	MP3, WMA, WAV, FLAC
BT connection	BT2.1+EDR
Storage	Supports TF card up to 32GB
Dimensions	86×86×38mm

---

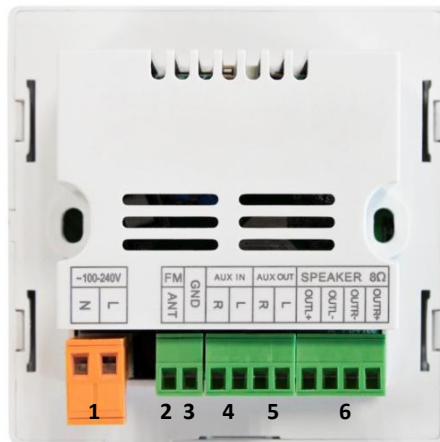
### Remote Control

---

Angle of effective emitter region	60°
Effective remote-controlled distance	10m
Battery of remote control	CR2032

---

## 8. REAR PANEL



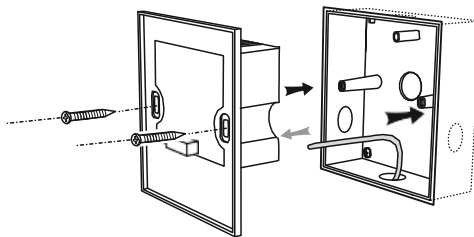
1. Power input: 100-240V (2xRV 1.0mm<sup>2</sup> multistranded copper core flexible wire)
2. FM antenna
3. Signal ground
4. Audio input (2×0.3mm<sup>2</sup> double-shielded audio cable)
5. Audio output (2×0.3mm<sup>2</sup> double-shielded audio cable)
6. Power amplifier output (2×0.3mm<sup>2</sup> double-shielded audio cable)

**IMPORTANT NOTE:** all wire connections shall not be naked

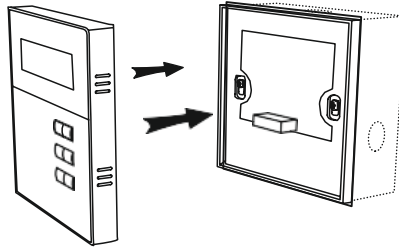
Function	Symbol	Name
Power input	N	Null line
	L	Live wire
FM	ANT	FM antenna
GND		Signal ground
AUX INPUT	R	Audio input right
	L	Audio input left
AUX OUTPUT	R	Audio output right
	L	Audio output left
Power amplifier output 8 ohm (min load)	OUTL+	Left speaker + terminal
	OUTL-	Left speaker - terminal
	OUTR-	Right speaker - terminal
	OUTR+	Right speaker + terminal

## 9. INSTALLATION

1. Install the surface-mount box in the desired location.
2. Connect the wiring to the rear panel of eWAMPBT+, and fix it with two screws to the installation box.



3. Insert the eWAMPBT+'s front panel.



## 10. PACKING LIST

- Front panel
- Rear panel
- Remote control
- Mounting screws
- Surface-mount box
- User manual
- Warranty card

**Serial number:**

**Bluetooth password:**



All product characteristics are subject to variation due to production tolerances. **NEEC AUDIO BARCELONA S.L.** reserves the right to make changes or improvements in the design or manufacturing that may affect these product specifications.

Motors, 166-168 08038 Barcelona - Spain - (+34) 932238403 [information@ecler.es](mailto:information@ecler.es)  
[www.ecler.com](http://www.ecler.com)