

**TAGA**<sup>®</sup>  
**CHARMONY**  
To Achieve Glorious Acoustics

## Custom Installations

---

Residential - Speakers

---

Residential - Electronics

---

Commercial Audio

---

Cables

---

2018 v. 1



Wherever you install our excellent products, in your home, garden, terrace, restaurant, office or shop you will always enjoy the highest quality sound.

Advanced materials, state-of-the-art engineering and innovative design by an international team of professional designers make us as one of the leaders in the audiophile CI industry.



# TAGA Harmony

## The TAGA Harmony story

The European founders of the TAGA Harmony brand Mr. Kokocinski from Poland and Mr. Richard from Germany started their involvement in the audio business in the early years of 1990.

They were recognized music lovers and specialists in the high-end audio and were dealing with repair and sales of high-end audio equipment.

They found out that most speaker brands that boasted top sound performance, offered their products at extremely high prices, but they did not really provide good sound quality.

**This prompted them to establish their own TAGA Harmony brand.**

At the beginning the company was operating in the field of sound engineering services and audio products enhancement. It took almost 2 years to develop first loudspeaker prototypes which met enthusiastic reception of audiophiles.

Nowadays TAGA Harmony brand is offering high quality products for the hi-fi and audio-video market.

Main types of products are: high-end, hi-fi and home theatre speakers, in-wall, in-ceiling and outdoor speakers, multimedia speakers, hi-fi electronics and accessories for speakers.

### "TAGA Harmony" logo decrypted

The meaning of TAGA logo is **To Achieve Glorious Acoustics** and it says everything about people behind the brand, their passion, devotion, philosophy and constant striving to perfection – it is TAGA Harmony's DNA.

It means that everything what TAGA Harmony designs, engineers or builds has one goal in mind: to provide the best sound and joy to music lovers around the World.

A strong basis for the logo was added: "**HARMONY**" to emphasize that on every step all products are created in harmony with nature.

### SOUND CRITERIA – TAGA Harmony MISSION

The main criteria TAGA Harmony has defined for sound performance of its products is:

- Accurate and perfect localization;
- Spacious soundstage;
- Low distortions;
- Flat midrange response;
- Extra wide sound dispersion;
- Powerful and deep bass;
- Impressive dynamics;
- Superior overall balance.



**TAGA Harmony is committed to this mission from the very beginning.**

The result is that TAGA Harmony loudspeakers and electronics can boast the finest music and home theatre performance with great dispersion and spaciousness, a low bass and stunning dynamics, adding sonic accuracy, precise location and ultra-low distortions.



Przemek Kokocinski - TAGA Harmony CEO and co-founder



### PASSION, ENGINEERING & EUROPEAN PERFECTION

Passion, love of music and European know-how behind all the products! Advanced materials, state of the art engineering and innovate design by a team of professional designers position TAGA Harmony as one of the leaders in the industry.

TAGA Harmony spends hundreds of hours on developing each and single product. During repeated listening tests and multiplied advanced measuring research carried by TAGA Harmony's R&D department, all potential weaknesses of the final product are adjusted and corrected to perfection.

Combined with the large scale of production all these features make TAGA Harmony product offer unbeatable value and sound performance!

### STRONG GROUND ON BOTH CONTINENTS

Nowadays TAGA Harmony is developing its worldwide activities in the high-end audio field through divisions located in Europe and Asia.

TAGA Harmony owns and operates an advanced production facility which consists of modern R&D department and production lines with independent quality inspection checkpoints.

**That is why almost all TAGA Harmony products and used components are designed and manufactured in-house.**

# TECHNOLOGY & DESIGN

[check specifications to determine which technology is used in your speaker]

## TWEETER DRIVERS



**TWG - TAGA WaveGuide** specialized horn-like design of tweeter faceplate utilizing concave diffusers supports equal and flat dispersion of sound in and off the axis of the driver.

**TPTTD - Taga Pure Titanium Tweeter Dome** with oversized magnet, ferrofluid cooling and heavy duty voice coil. The tweeter can bear high power and its performance is almost perfectly accurate, clear, smooth and detailed.



**SILK, MYLAR®, PEI, PEA or PET dome tweeters** with ferrofluid cooling and damping can handle high power and their performance is very accurate, clear, smooth and detailed.

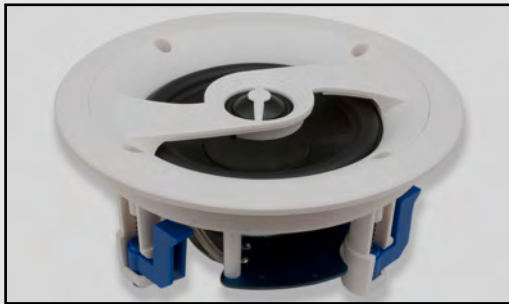


**SWIVEL MOUNT** - you can direct the stream of high frequencies toward selected area in a room.

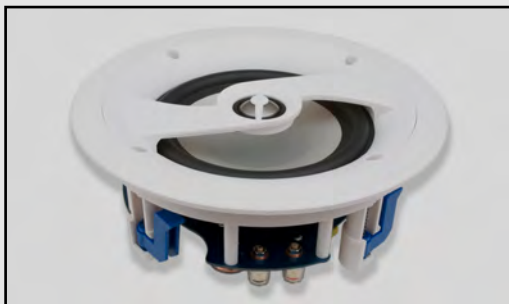


**TREBLE SWITCH** - you can regulate tweeter level [ $\pm 2\text{dB}$  or  $\pm 3\text{dB}$  depending on the model] to match with the speaker position and room acoustics.

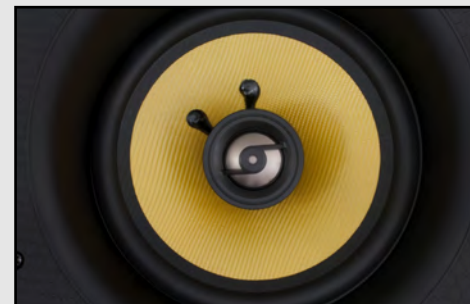
## MIDRANGE, BASS / MIDRANGE, BASS DRIVERS



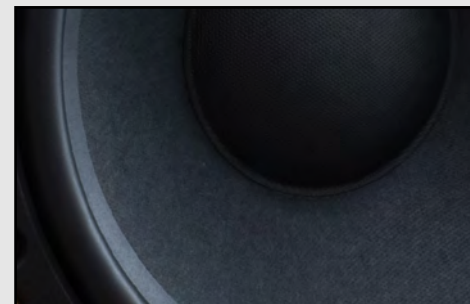
**TWCD - Taga Woolen Cone Driver** (with aluminum dust caps and chassis, oversized magnet structure) and heavy duty combo T-yoke, pure copper voice coil, all of which allow high power handling as well as deep, precise and detailed bass performance and full, rich and spacious midrange frequencies.



**TPACD - Taga Pure Aluminum Cone Driver** (with aluminum dust caps and chassis, oversized magnet structure) and heavy duty combo T-yoke, pure copper voice coil, all of which allow high power handling as well as deep, precise and detailed bass performance and full, rich and spacious midrange frequencies.

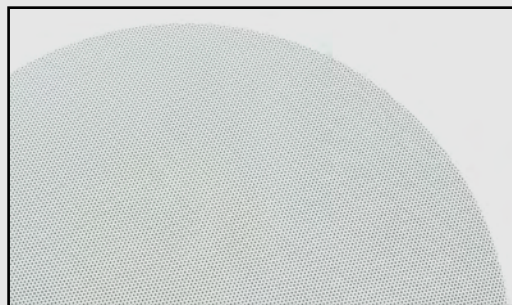


**KEVLAR® cone drivers** utilizing heavy duty voice coil and coil former is responsible for high power handling as well as deep, precise and detailed bass and rich, sweet midranges. They are ultra-rigid and light, ensure great dispersion at all frequencies, extra dynamic, natural, clear and powerful sound performance.



**POLYPROPYLENE or PAPER cone drivers** are rigid, light and fast providing rich, spacious and sweet mid frequencies and deep, precise bass. Heavy duty voice coils can stand high temperatures and power inputs.

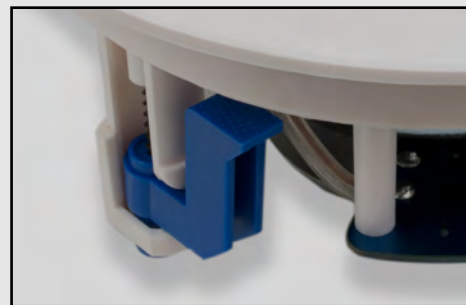
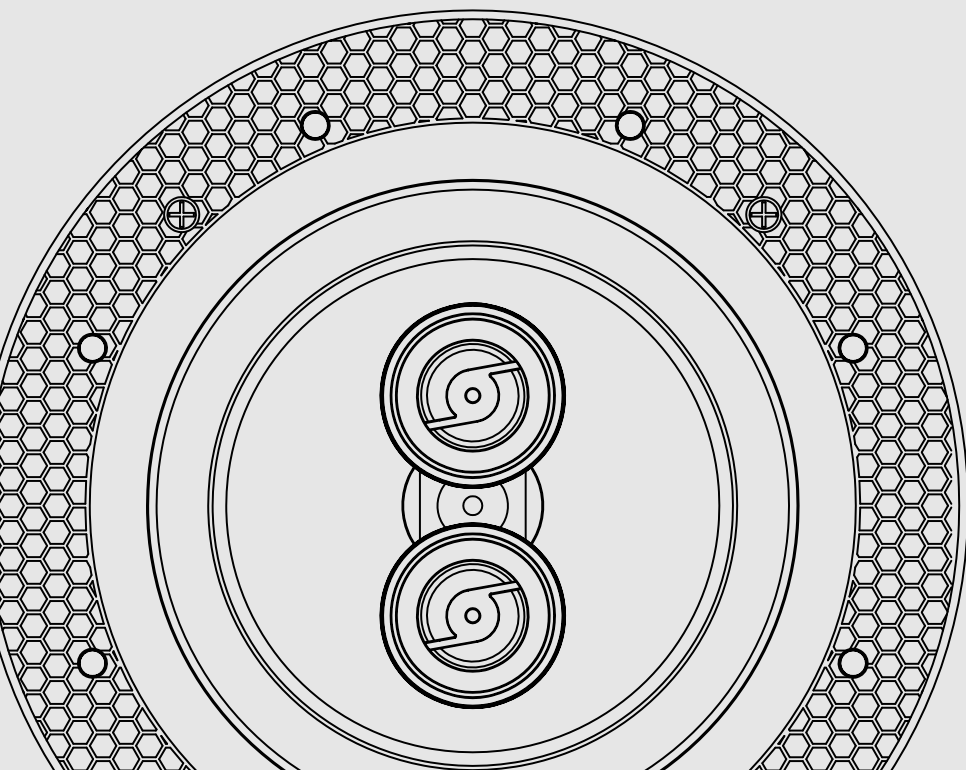
## GRILLS, BRACKETS & CHASSIS



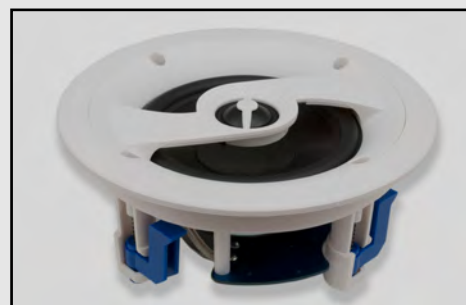
**TBF - TAGA Bezel-Free grills** are magnetically mounted and paintable. Grill magnets are very strong and mounted in the chassis invisibly from the outer side. They are aesthetic and virtually disappear in the ceiling.



**TSLB - TAGA Super Low-profile Bezel or Reduced Bezel grills** are magnetically mounted (selected models only) and paintable. A very thin bezel frame is very aesthetic and virtually disappears in the ceiling or wall.



**TEI - TAGA Easy Install** mounting brackets are extremely easy and safe to install. The ABS clamps are in a visible blue color to ease installation in dark places.



**TIMPC - TAGA Injection-Molded Polymer Chassis** is very rigid and strong to minimize distortions, vibrations or resonances.



**TEC - TAGA Easy Connection.** High quality push-in banana binding posts accept raw speaker cables up to 10AWG (selected models) and most popular types of connectors (banana or pin plugs). Our binding posts make the installation very easy task to do.

# RESIDENTIAL

In-Wall / In-Ceiling



# CI PRO

## TCI Platinum SE, TCI Platinum

Our valued customers and professional installers insisted on us to design high class in-ceiling speakers, which would be able to provide the similar level of sound quality as could be found in our high-end Platinum Special Edition and premium Platinum series. Our engineers had taken up this challenge and after many months of intense testing and measurements created two new high-end series: Taga Custom Installations Platinum Special Edition (TCI Platinum SE) and Platinum (TCI Platinum).

- Very slim chassis to allow installations even in shallow places;
- High-End banana binding posts;
- High 8 Ω impedance.



**Platinum-100R SE**



**Platinum-60R SE**



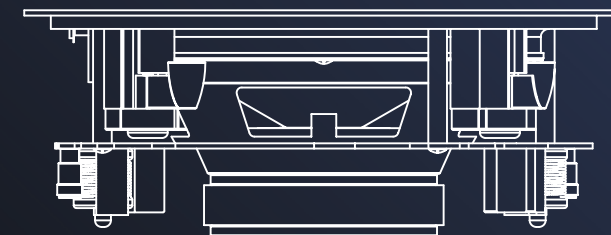
**Platinum-100R**



**Platinum-60R**

<b>Speaker Type</b>	In-Wall / In-Ceiling Speaker	In-Wall / In-Ceiling Speaker	In-Wall / In-Ceiling Speaker	In-Wall / In-Ceiling Speaker
<b>Design</b>	2-way TBF magnet grill TEI mounting bracket TIMPC enclosure	2-way TBF magnet grill TEI mounting bracket TIMPC enclosure	2-way TBF magnet grill TEI mounting bracket TIMPC enclosure	2-way TBF magnet grill TEI mounting bracket TIMPC enclosure
<b>Drivers Configuration</b>	Tweeter 25 mm (1") TPTTD TWG faceplate	Tweeter 25 mm (1") TPTTD TWG faceplate	Tweeter 25 mm (1") TPTTD TWG faceplate	Tweeter 25 mm (1") TPTTD TWG faceplate
<b>Maximum Power</b>	Bass / Midrange 165 mm (6.5") TWCD 150W	Bass / Midrange 133 mm (5.25") TWCD 115W	Bass / Midrange 165 mm (6.5") TPACD 150W	Bass / Midrange 133 mm (5.25") TPACD 115W
<b>Frequency Response</b>	28Hz - 40kHz	33Hz - 40kHz	30Hz - 40kHz	35Hz - 40kHz
<b>Dimensions (Dia x D)</b>	23.8 x 9.2 cm	20.3 x 8.8 cm	23.8 x 9.2 cm	20.3 x 8.8 cm
<b>Minimum Mounting Depth</b>	89 mm	85 mm	89 mm	85 mm
<b>Cutout Dimensions (Dia)</b>	200 mm	170 mm	200 mm	170 mm
<b>Net Weight</b>	2 kg / pc	1.6 kg / pc	1.85 kg / pc	1.5 kg / pc
<b>Finishes</b>	White, Paintable (with grill on)			

Their sound can be compared to high-end regular home speakers and they provide clear, natural and dynamic performance hardly to be met in any other CI speakers. Our specialized horn-like, **TWG TAGA** Waveguide design of tweeter faceplate mounted on a transverse rib and which is known from our home products is now available in our in-ceiling speakers. It provides spacious, crystal clear and rich sound performance even at highest volumes. Our high-end bass-midrange drivers (**TWCD** Woolen Cone Driver in the TCI Platinum SE and **TPACD** Pure Aluminum Cone Driver in the TCI Platinum) deliver natural, live and rich mids and extremely deep, articulate bass with superior timing and pitch.



# CI PRO GTCS v.2



**GTCS-606-6R SE**



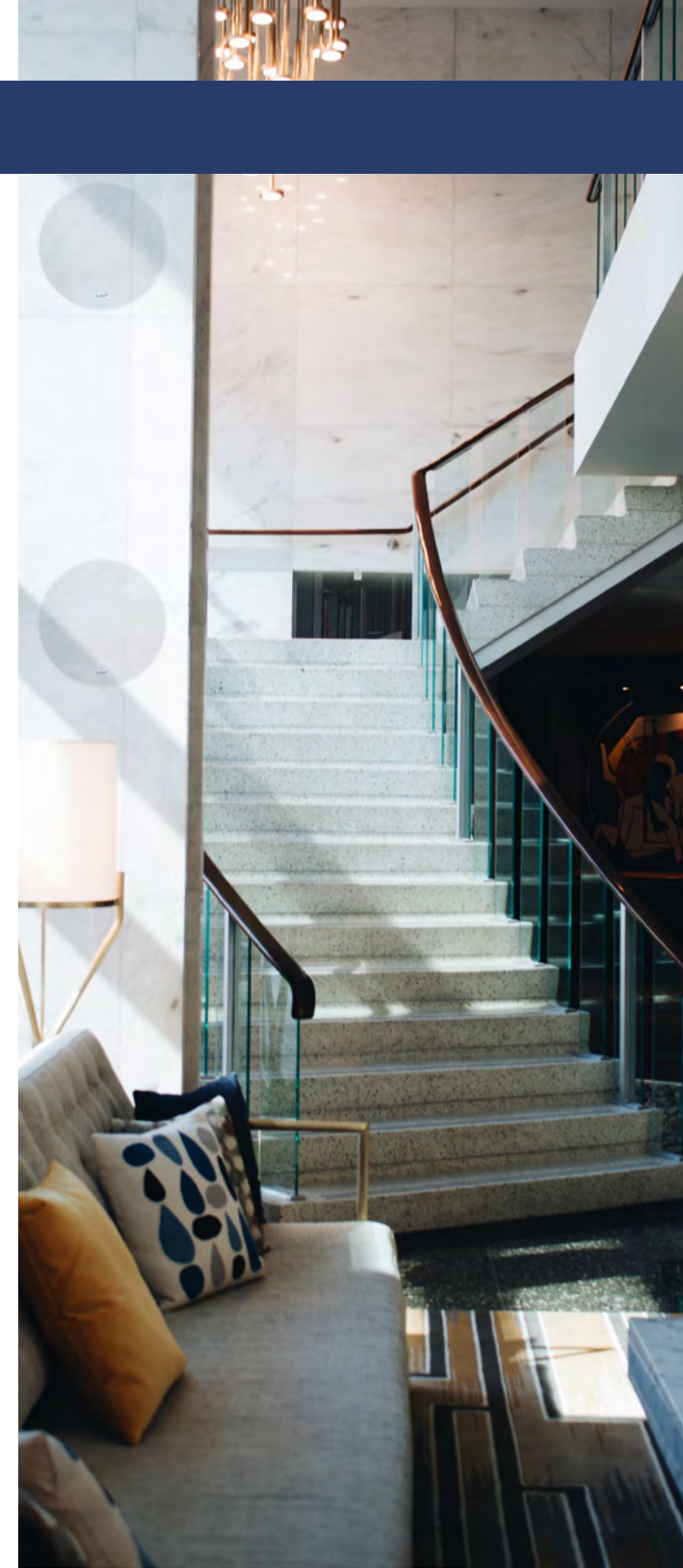
**GTCS-606-5R SE**



Speaker Type	In-Wall / In-Ceiling Speaker	In-Wall / In-Ceiling Speaker
<b>Design</b>	2-way TBF magnet grill TEI mounting bracket TIMPC enclosure TEC binding posts	2-way TBF magnet grill TEI mounting bracket TIMPC enclosure TEC binding posts
<b>Drivers Configuration</b>	Tweeter 25 mm (1") Silk TWG faceplate	Tweeter 25 mm (1") Silk TWG faceplate
<b>Maximum Power</b>	130W	100W
<b>Frequency Response</b>	30Hz - 25kHz	35Hz - 25kHz
<b>Dimensions (Dia x D)</b>	23.8 x 9.2 cm	20.3 x 8.8 cm
<b>Minimum Mounting Depth</b>	89 mm	85 mm
<b>Cutout Dimensions (Dia)</b>	200 mm	170 mm
<b>Net Weight</b>	1.9 kg / pc	1.45 kg / pc
<b>Finishes</b>	White, Paintable (with grill on)	

These bezel-free in-ceiling speakers were created based on our award-winning TAV-606F SE technology. Their sound can be compared to high-end regular home speakers and they provide clear, natural and dynamic performance hardly to be met in any CI speakers. Our specialized horn-like, **TWG TAGA Waveguide** design of tweeter faceplate mounted on a transverse rib and which is known from our home products is now available in our in-ceiling speakers. It provides spacious, crystal clear and rich sound performance even at highest volumes.

- Very slim chassis to allow installations even in shallow places;
- High 8 Ω impedance.





# Reduced Bezel series



The **RB** (Reduced Bezel) series of in-ceiling speakers has low-profile or super low-profile bezels to allow speakers almost disappear in a room. Nowadays the expectation from modern in-ceiling speakers is not only the great sound but less visibility at the same time. With the RB series you can have both! The sound is clear, natural, dynamic and provides wide dispersion throughout a listening area, and thanks to slim bezels you are hard to see speakers mounted in your ceiling!

The top models in this series utilize high-end TPTTD Taga Pure Titanium Tweeter Dome, which can bear high power and its performance is very accurate, clear, smooth and detailed. We pay special attention to equal and flat dispersion of sound in and off the axis of all our in-ceiling speakers.

- High 8 Ω impedance.

The **RB-1650BT** is a 2 x 30W RMS active speaker paired with a passive one.

It allows to build a cost-effective audio installation and stream music wirelessly via **Bluetooth®** (music and the Internet radio) or connect an additional stereo equipment via a line input (RCA / 3.5 mm). Unique features like remote control, front and rear IR receivers, RS-232 port, programmable Auto Standby and Bass / Treble regulations help to integrate the RB-1650BT into any audio-visual installation.

The daisy-chain connection allows to connect many pairs of RB BT speakers to the main speaker and build a very large and sophisticated AV installation.

The **RB-550SG** has a low-profile 5mm **square** bezel, what make it less visible after mounting in your ceiling.



**RB-1650BT**

**RB-950**

**RB-850 v.2**

**RB-550SG**

Speaker Type	In-Wall / In-Ceiling Speaker	In-Wall / In-Ceiling Speaker	In-Wall / In-Ceiling Speaker	In-Wall / In-Ceiling Speaker
<b>Design</b>	Active System (1 active & 1 passive) Reduced bezel Magnet grill TEI mounting bracket TIMPC enclosure	2-way TSLB magnet grill TEI mounting bracket TIMPC enclosure TEC binding posts	2-way 13° driver orientation TSLB magnet grill TEI mounting bracket TIMPC enclosure TEC binding posts	2-way Reduced Bezel Magnet grill TEI mounting bracket TIMPC enclosure TEC binding posts
<b>Drivers Configuration</b>	Tweeter 25 mm (1") TPTTD Swivel mount	Tweeter 25 mm (1") TPTTD Swivel mount +/-3dB Treble switch	Tweeter 25 mm (1") TPTTD Swivel mount +/-3 dB Treble Switch	Tweeter 25 mm (1") Silk
<b>Maximum Power</b>	2 x 30W RMS (built-in amplifier)	150W	130W	120W
<b>Frequency Response</b>	38Hz - 25kHz	35Hz - 25kHz	37Hz - 25kHz	45Hz - 25kHz
<b>Dimensions (Dia x D)</b>	23 x 9,5 cm	27,7 x 10,5 cm	26 x 12 cm	23,5 x 9,2 cm
<b>Minimum Mounting Depth</b>	130 mm	105 mm	112 mm	90 mm
<b>Cutout Dimensions (Dia)</b>	198 mm	258 mm	245 mm	209 mm
<b>Net Weight</b>	Active: 1,3 kg / pc Passive: 1,2 kg / pc	2,25 kg / pc	1,8 kg / pc	1,5 kg / pc
<b>Finishes</b>	White, Paintable (with grill on)			

# TCW series



All speakers are designed to be used both in music and home theatre systems in any area of your home. If you want your sound system to “disappear” in the room TAGA Harmony in-wall and in-ceiling speakers are the best choice!

They are the choice that can provide unbelievably perfect performance similar to big regular speakers, allowing to keep your room space free.

- High 8 Ω impedance.

The TCW series speakers provide superior sound performance at amazing price levels. They utilize very stiff and strong injection-molded polymer chassis, which minimize distortion, vibrations or resonances and specialized mounting brackets that make installations very easy.



**TCW-880R SM**



**TCW-600R v.2**



**TCW-500R v.4**



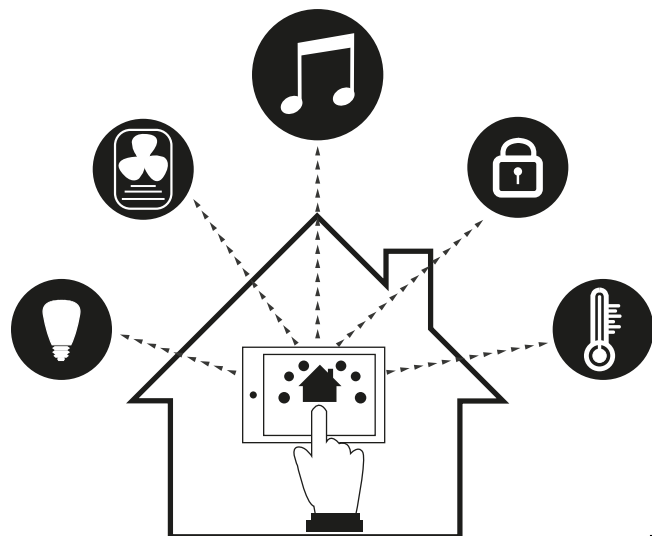
**TCW-380R**



**TCW-300R SM**

Speaker Type	In-Wall / In-Ceiling Speaker Stereo/Mono	In-Wall / In-Ceiling Speaker Stereo/Mono	In-Wall / In-Ceiling Speaker Stereo/Mono	In-Wall / In-Ceiling Speaker Stereo/Mono	In-Wall / In-Ceiling Speaker Stereo/Mono
Design	2-way TSLB magnet grill TEI mounting bracket TIMPC enclosure TEC binding posts	2-way TEI mounting bracket TIMPC enclosure TEC binding posts	2-way TEI mounting bracket TIMPC enclosure TEC binding posts	2-way TSLB magnet grill TEI mounting bracket TIMPC enclosure TEC binding posts	2-way TEI mounting bracket TIMPC enclosure TEC binding posts
Drivers Configuration	Tweeter 2 x 19 mm (0.75") TPTTD ±3 dB Treble switch	Tweeter 2 x 19 mm (0.75") Silk	Tweeter 19 mm (0.75") Silk Swivel mount ± 2dB Treble switch	Tweeter 25 mm (1") Mylar®	Tweeter 2 x 13 mm (0.5") Mylar®
Maximum Power	Bass / Midrange 203 mm (8") Kevlar®	Bass / Midrange 165 mm (6.5") Kevlar®	Bass / Midrange 165 mm (6.5") Kevlar®	Bass / Midrange 203 mm (8") Polypropylene	Bass / Midrange 165 mm (6.5") Polypropylene
Frequency Response	160W	100W	100W	150W	100W
Dimensions (Dia x D) or (H x W x D)	35Hz - 20kHz	40Hz - 20kHz	30Hz - 20kHz	37Hz - 20kHz	43Hz - 20kHz
Minimum Mounting Depth	27.7 x 10.5 cm	23.4 x 7.4 cm	23.5 x 8.9 cm	27.7 x 10.5 cm	22.8 x 8.5 cm
Cutout Dimensions (Dia or H x W)	105 mm	70 mm	90 mm	105 mm	90 mm
Net Weight	255 mm	208 mm	199 mm	255 mm	198 mm
Finishes	2.3 kg / pc	1.8 kg / pc	1.5 kg / pc	2.25 kg / pc	1.25 kg / pc
			White, Paintable (with grill on)		

# TCW series



TCW-280R | TCW-180R



TCW-100R v.3



TCW-80R



TCW-900



TCW-880



TCW-780 | TCW-680

Speaker Type	In-Wall / In-Ceiling Speaker	In-Wall / In-Ceiling Speaker	In-Wall / In-Ceiling Speaker	In-Wall / In-Ceiling Speaker	In-Wall / In-Ceiling Speaker	In-Wall / In-Ceiling Speaker
Design	2-way TSLB magnet grill TEI mounting bracket TIMPC enclosure TEC binding posts [TCW-280]	2-way TEI mounting bracket TIMPC enclosure TEC binding posts	Full-Range Reduced Bezel TEI mounting bracket TIMPC enclosure TEC binding posts	2-way Reduced Bezel Magnet grill TEI mounting bracket TIMPC enclosure TEC binding posts	2-way TSLB magnet grill TEI mounting bracket TIMPC enclosure TEC binding posts	2-way TSLB magnet grill TEI mounting bracket TIMPC enclosure TEC binding posts
Drivers Configuration	Tweeter 25 mm (1")   19 mm (0.75") Silk   Mylar®	Tweeter 19 mm (0.75") Silk Swivel mount	76 mm (3") Polypropylene Full-range driver	Tweeter 25 mm (1") Silk Swivel mount ±3 dB Treble switch	Tweeter 25 mm (1") TPTTD Swivel mount ±3 dB Treble switch	Tweeter 25 mm (1") TPTTD Swivel mount ±3 dB Treble switch
	Bass / Midrange 165 mm (6.5")   133 mm (5.25") Polypropylene	Bass / Midrange 133 mm (5.25") Polypropylene		Bass / Midrange 203 mm (8") Polypropylene	Bass / Midrange 203 mm (8") Kevlar®	Bass / Midrange 165 mm (6.5")   133 mm (5.25") Kevlar®
Maximum Power	100W   80W	70W	40W	240W	160W	130W   100W
Frequency Response	42Hz - 20kHz   46Hz - 20kHz	48Hz - 20kHz	80Hz - 20kHz	30Hz - 20kHz	35Hz - 20kHz	40Hz - 20kHz   42Hz - 20kHz
Dimensions (Dia x D) or (H x W x D)	22.7 x 8.7 cm   19.6 x 7.5 cm	20.2 x 7.3 cm	10 x 5.2 cm	35.5 x 26.2 x 9.15 cm	36.2 x 24.2 x 10.5 cm	30 x 20.5 x 8.7 cm   26.7 x 17.5 x 7.5 cm
Minimum Mounting Depth	83 mm   75 mm	73 mm	55 mm	88 mm	100 mm	90 mm   75 mm
Cutout Dimensions (Dia or H x W)	210 mm   179 mm	168 mm	88 mm	329 x 236 mm	340 x 218 mm	280 x 185 mm   245 x 153 mm
Net Weight	1 kg / pc   0.88 kg / pc	1 kg / pc	0.4 kg / pc	2.8 kg / pc	2.13 kg / pc	1.7 kg / pc   1.25 kg / pc
Finishes				White, Paintable (with grill on)		

# TLCR series

The TLCR series speakers provide superior sound performance at amazing price levels. They are multi-purpose speakers and can be used as Left, Center or Right channel. Now you are able to build a multi-channel system based on the same kind of speakers, which is a perfect solution to keep all channels integrity and sound style.



**TLCR-580**



**TLCR-525**

Speaker Type	In-Wall / In-Ceiling LCR	In-Wall / In-Ceiling LCR
<b>Design</b>	2-way TSLB magnet grill TEI mounting bracket TIMPC enclosure TEC binding posts	2-way TEI mounting bracket TIMPC enclosure TEC binding posts
<b>Drivers Configuration</b>	Tweeter 25 mm (1") TPTTD Swivel mount ±3 dB Treble switch	Tweeter 25 mm (1") TPTTD Swivel mount
<b>Maximum Power</b>	100W	90W
<b>Impedance</b>	8Ω	8Ω
<b>Frequency Response</b>	50Hz - 20kHz	58Hz - 22kHz
<b>Dimensions (H x W x D)</b>	17.5 x 38.6 x 8.2 cm	22.2 x 45 x 8.8 cm
<b>Minimum Mounting Depth</b>	78 mm	76 mm
<b>Cutout Dimensions (H x W)</b>	155 x 365 mm	188 x 415 mm
<b>Net Weight</b>	2.75 kg / pc	2.93 kg / pc
<b>Finishes</b>	White, Paintable (with grill on)	

# TCP series

The TCP series in-wall / in-ceiling subwoofers provide superior, rich and powerful sound performance of bass at amazing price levels.

If you look to upgrade your sound either in multi-room, stereo or home theatre installations, with strong, well defined and fast bass, our subwoofers are the perfect choice, without occupying your valuable floor space!



**TCP-1000**



**TCP-500R**

Speaker Type	In-Wall / In-Ceiling Subwoofer	In-Wall / In-Ceiling Subwoofer
<b>Design</b>	1-way TEI mounting bracket TIMPC enclosure TEC binding posts	1-way TBF magnet grill TEI mounting bracket TIMPC enclosure TEC binding posts
<b>Drivers Configuration</b>	Bass 255 mm (10") Kevlar®	Bass 203 mm (8") Polypropylene
<b>Maximum Power</b>	250W	150W
<b>Impedance</b>	8Ω	8Ω
<b>Frequency Response</b>	35Hz - 500Hz	45Hz - 500Hz
<b>Dimensions (Dia x D) or (H x W x D)</b>	30.3 x 30.3 x 8.8 cm	28.4 x 9.9 cm
<b>Minimum Mounting Depth</b>	118 mm	115 mm
<b>Cutout Dimensions (Dia or H x W)</b>	269 mm	241 mm
<b>Net Weight</b>	2.75 kg / pc	3 kg / pc
<b>Finishes</b>	White, Paintable (with grill on)	



# RESIDENTIAL

Outdoor / Indoor



# TOS Platinum SE / TOS Platinum / TOS series



Most models are weather, UV and water resistant. Stylish, eye-catching appearance and high-performance sound make this series perfect solution for outdoors and indoors usage. Mounting brackets make installation very easy as well as speakers can be mounted horizontally and vertically.

TOS Platinum SE and TOS Platinum technology (drivers and fine-tuning) is based on our high-end Platinum SE and premium Platinum home speaker series. Now you can enjoy the similar audiophile level of sound quality everywhere!

- Very rigid and strong polymer cabinets to minimize distortion, vibrations or resonances;
- Solid brass and rustproof hardware, aluminum grill (selected models) make all TOS series completely weather and rustproof;
- Easy to use TEC push-in banana binding posts (excl. TOS Platinum SE models);
- High 8 or 6  $\Omega$  impedance (excl. TOS Platinum SE and TOS Platinum models).



# TOS Platinum SE / TOS Platinum / TOS series



**TOS Platinum-100 SE**



**TOS Platinum-60**



**TOS-715 v.2**



**TOS-600 v.2 | TOS-515**



**TOS-515 SM**



**TOS-415 v.2**



**TOS-315**



**TOS-215**

Speaker Type	Outdoor / Indoor Speaker	Outdoor / Indoor Speaker	Outdoor / Indoor Speaker	Outdoor / Indoor Speaker	Outdoor / Indoor Speaker Stereo/Mono	Outdoor / Indoor Speaker	Outdoor / Indoor Speaker	Outdoor / Indoor Speaker
<b>Drivers Configuration</b>	Tweeter 25 mm (1") TPTTD Bass / Midrange 165 mm (6.5") TWCD	Tweeter 25 mm (1") TPTTD Bass / Midrange 133 mm (5.25") TPACD	Tweeter 25 mm (1") TPTTD Bass / Midrange 203 mm (8") Polypropylene	Tweeter 25 mm (1") TPTTD Bass / Midrange Polypropylene 165 mm (6.5")   133 mm (5.25")	Tweeter Dual 25 mm (1") PEI Bass / Midrange 133 mm (5.25") Dual voice coil, Polypropylene	Tweeter 25 mm (1") Silk Bass / Midrange 133 mm (5.25") Polypropylene	Tweeter 25 mm (1") Silk Bass / Midrange 102 mm (4") Polypropylene	Tweeter 13mm (0.5") Silk Bass / Midrange 76 mm (3") Polypropylene
<b>Maximum Power</b>	180W	140W	240W	180W   120W	150W	180W	100W	60W
<b>Impedance</b>	4Ω (8Ω compatible)	4Ω (8Ω compatible)	8Ω	8Ω	8Ω	6Ω	8Ω	8Ω
<b>Frequency Response</b>	38Hz - 40kHz	48Hz - 40kHz	30Hz - 20kHz	40Hz - 20kHz   50Hz - 20kHz	40Hz - 20kHz	58Hz - 20kHz	68Hz - 20kHz	75Hz - 20kHz
<b>Dimensions (H x W x D)</b>	30 x 22.6 x 21.7 cm	25.7 x 19.6 x 19 cm	43.5 x 30 x 26.5 cm	28.7 x 19.6 x 19.5 cm   23.9 x 16.3 x 16 cm	28.7 x 19.6 x 19.5 cm	24.4 x 18.5 x 16.3 cm	20.3 x 13.6 x 13.5 cm	15.3 x 10.6 x 10.6 cm
<b>Net Weight</b>	4.5 kg / pc	3.5 kg / pc	5.7 kg / pc	3 kg / pc   1.9 kg / pc	2.8 kg / pc	2.9 kg / pc	1.3 kg / pc	0.8 kg / pc
<b>Finishes</b>					Black, White			

## TOW series

The TOW series flat on-wall speakers are ideal solution for public address and background music systems in schools, halls, conference rooms, restaurants as well as at home. They provide clean, natural, dynamic and powerful sound performance with enhanced dispersion. The installation has never been easier - just hang them on a hook mounted in a wall!

- Very slim cabinet for discreet wall mounting (depth only 3.5cm);
- Easy to use spring clips terminals accepting bare speaker cables;
- High 8 Ω impedance.

### TOW-180F

<b>Drivers Configuration</b>	Tweeter 13 mm (0.5") Mylar® Bass / Midrange 133 mm (5.25") Paper
<b>Maximum Power</b>	60W
<b>Frequency Response</b>	75Hz - 20kHz
<b>Dimensions (H x W x D)</b>	27.5 x 18.5 x 3.5 cm
<b>Net Weight</b>	0.53 kg / pc
<b>Finishes</b>	Black, White



# TRS series



TRS-30SM v.2



TRS-20 v.3



TRS-15



TRS-10



TRS-5L

<b>Speaker Type</b>	Garden Speaker Stereo/Mono	Garden Speaker Mono	Garden Speaker Mono	Garden Speaker Mono	Garden Speaker Mono
<b>Drivers Configuration</b>	Tweeter 2 x 19 mm (07,5") PEI	Tweeter 25 mm (1") PET	Tweeter 25 mm (1") PET	Tweeter 25 mm (1") PET	63 mm (2.5") Treated Paper Full-range driver
<b>Maximum Power</b>	200W	200W	100W	60W	30W
<b>Impedance</b>	8Ω	8Ω	8Ω	8Ω	8Ω
<b>Frequency Response</b>	30Hz - 20kHz	30Hz - 20kHz	45Hz - 20kHz	70Hz - 20kHz	80Hz - 20kHz
<b>Dimensions (H x W x D)</b>	32.5 x 38 x 49 cm	29 x 34 x 38 cm	23 x 32 x 24 cm	23.2 x 23 x 19.5 cm	
<b>Net Weight</b>	7 kg / pc	5.8 kg / pc	2.7 kg / pc	2.6 kg / pc	0.4 kg / pc
<b>Finishes</b>	Granite, Sandstone	Sandstone, White Granite	Granite, White Granite	Granite, White Granite	Grey, Ivory

The TRS series garden speakers are designed for installation in places such as gardens, patios, terraces and outdoor open spaces.

Fully sealed fiberglass cabinets with aluminum grilles are water, weather and UV-resistant and can withstand very severe weather conditions. Their stone-like look perfectly matches with the architecture of any outdoor environment.

### TRS-5L key features:

#### Variety of installation options:

- In-Ground (Ground Stake incl.).
- On ceilings and walls (Ceiling-Wall mount incl.).
- On horizontal and vertical surfaces like floors, decks or garden structure (Surface Mount incl.).

**Vertical angle regulation** to adjust the sound dispersion.





# RESIDENTIAL

Electronics



# Amplifiers

Features	600MULTI	400MIC	250MIC v.2	25Mini
<b>MP3 (3.5 mm stereo jack) input</b> on the front panel (rear in the TA-25Mini): to quickly connect a smartphone, tablet or laptop.	✓	✓	✓	✓
Oversized, audiophile grade toroidal transformer.	✓	✓	✓	
<b>Microphone input</b> with a mixing and echo control: perfect for voice broadcasting.	✓	✓	✓	
<b>USB input:</b> almost endless music playback.	✓	✓		
<b>2 stereo speaker outputs:</b> simple and cost-effective 2-zone sound system.		✓	✓	
Multi-room sound: 4-zone stereo amp to drive 4 pairs of speakers.				
Easily deliver sound to many rooms.	✓			
Each zone with <b>independent:</b> source, volume and sound regulations.				
Headphone output: for discrete listening.		✓		
<b>Limiters</b> to prevent clipping of the power amplifier.				✓

The TA integrated amplifiers are a perfect and cost-efficient solution for residential as well as commercial installations in restaurants, pubs, shops, conferencing rooms, fitness clubs for both background music and voice playback systems. They deliver pure and distortion-limited power as well as rich sound performance with stunning accuracy, soundstage and sensational dynamics.

TA-600MULTI



TA-400MIC



TA-600 MULTI

	TA-600 MULTI	TA-400MIC	TA-250MIC v.2	TA-25Mini
<b>Type</b>	CI 4-zone stereo amplifier	CI A/B speaker stereo amplifier	CI A/B speaker stereo amplifier	CI mini stereo amplifier
<b>Power Output</b>	All zones driven: 2 x 16W RMS / 8Ω / zone 2 x 18W RMS / 4Ω / zone	2 x 60W RMS / 8Ω 2 x 90W RMS / 4Ω	2 x 40W RMS / 8Ω 2 x 50W RMS / 4Ω	2 x 25W / 8Ω Class D
	One zone driven: 2 x 20W RMS / 8Ω 2 x 30W RMS / 4Ω			
<b>Frequency Response</b>	20Hz – 20kHz	30Hz – 20kHz	30Hz – 20kHz	30Hz – 18kHz
<b>Inputs</b>	USB* RCA stereo CD, AUX MP3 (3.5 mm)	USB* RCA stereo CD, AUX MP3 (3.5 mm)	RCA stereo CD, AUX1, AUX2 MP3 (3.5 mm)	Balanced, 3.5 mm unbalanced
<b>Output</b>	-	RCA stereo REC	-	-
<b>Microphone Input</b>	Sensitivity 10mV ; THD 2%	Sensitivity 7mV ; THD 1%	Sensitivity 10mV ; THD 2%	-
<b>Headphone Output</b>	-	20mW(32Ω) ; THD 0.5%	-	-
<b>AC Power, Power Consumption</b>	220-240V 50/60Hz, 200W	220-240V 50/60Hz, 250W	220-240V 50/60Hz, 120W	DC 24V, max. 60W
<b>Dimensions (H x W x D)</b>	10.7 x 43 x 31 cm	9.1 x 42 x 31.7 cm	9.7 x 42 x 32.3 cm	3.2 x 15.8 x 11 cm
<b>Net Weight</b>	6.6 kg / pc	6.3 kg / pc	6.2 kg / pc	0.42 kg / pc
<b>Finishes</b>			Black	

\*Supported file formats: MP3 / WMA / WAV / APE

TA-250MIC v.2



TA-25Mini



# Speaker selectors

The TVS and TS speaker selectors are an efficient, affordable way of expanding your audio system at home, office and other places and can be used for many different applications.

Our highest model can transmit audio signal from 2 independent sources to 4 different zones and you can select each of 2 sources for each of 4 zones and even independently regulate volume level in each zone.

Our speaker selector is a device that allows the user to transform one audio input source into multiple rooms - it is the easiest and cost-effective way to build a multi-room sound system!



	TVS-4	TS-8	TS-4
<b>Type</b>	Speaker Selector with Volume Control	Speaker Selector	Speaker Selector
<b>Features</b>	<ul style="list-style-type: none"> <li>4-Zone, Dual Source</li> <li>Impedance Matching</li> <li>A/B Source Amplifiers</li> <li>On/Off for each zone</li> <li>Volume for each zone</li> <li>A/B Selector for each zone</li> <li>Aluminum front and Volume Knobs</li> <li>Removable, Solder-less Terminals</li> <li>Accepts up to 14AWG Cables</li> <li>200W max / 100W RMS per channel</li> </ul>	<ul style="list-style-type: none"> <li>8-Zone</li> <li>Protecting Circuit</li> <li>On/Off for each zone</li> <li>Removable, Solder-less Terminals</li> <li>Accepts up to 14AWG Cables</li> <li>200W max / 100W RMS per channel</li> </ul>	<ul style="list-style-type: none"> <li>4-Zone</li> <li>Protecting Circuit</li> <li>On/Off for each zone</li> <li>Removable, Solder-less Terminals</li> <li>Accepts up to 14AWG Cables</li> <li>140W max / 70W RMS per channel</li> </ul>
<b>Dimensions (H x W x D)</b>	6.3 x 43.2 x 16 cm	4.9 x 43.2 x 11.2 cm	4.9 x 21.6 x 11.2 cm
<b>Finishes</b>		Black	

# Volume regulators

The TVR volume regulators are high quality stereo controllers designed for wide range frequency response at all volume levels.

They feature high power handling, 12-step „make before break“ switching, incorporate selectable impedance matching to connect up to 8 speaker pairs and employ detachable connectors for quick and easy installation.

Each volume regulator includes a matching knob, Decora® style insert, cover plate and all screws.



TVR-10IR



TVR-10



TVR-7



TVR-7SL

	TVR-10IR	TVR-10	TVR-7	TVR-7SL
<b>Type</b>	Rotary Volume Regulator with IR Receiver	Rotary Volume Regulator	Rotary Volume Regulator	Slide Volume Regulator
<b>Features</b>	100 watts per channel Impedance matching (1X, 2X, 4X, and 8X) 12-step, high quality autoformer switch Decora® insert	100 watts per channel Impedance matching (1X, 2X, 4X, and 8X) 12-step, high quality autoformer switch Decora® insert	75 watts per channel Impedance matching (1X, 2X, 4X, and 8X) 12-step, high quality autoformer switch Decora® insert	75 watts per channel Impedance matching (1X, 2X, 4X, and 8X) 12-step, high quality autoformer switch Decora® insert
<b>Cutout Dimensions (H x W)</b>	70 x 41 mm	70 x 41 mm	75 x 41 mm	72 x 37 mm
<b>Minimum Mounting Depth</b>	71 mm	71 mm	67 mm	62 mm
<b>Plate Dimensions (H x W)</b>	113 x 70 mm	113 x 70 mm	113 x 70 mm	113 x 70 mm
<b>Finishes</b>			White, Paintable	

# COMMERCIAL AUDIO



# V series

The V series 100V line speakers with built-in transformers are ideal solutions for public address and background music systems in halls, conference rooms, restaurants and other commercial applications. They can provide clean, natural, dynamic and powerful sound performance with enhanced dispersion and offer very simple and quick installations.



**TCW-66RV**



**TCW-65RV**



**TCW-64RV**



**TCW-55V**



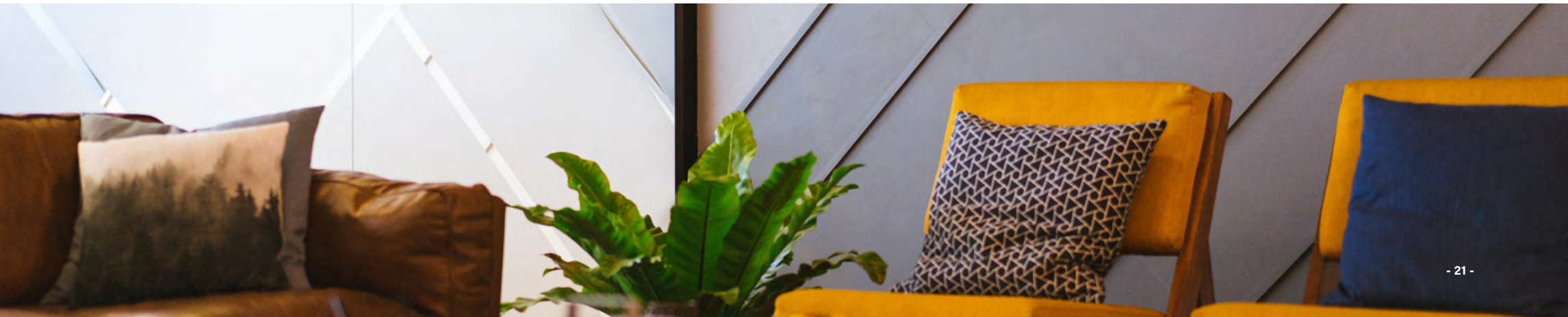
**TOW-65V**



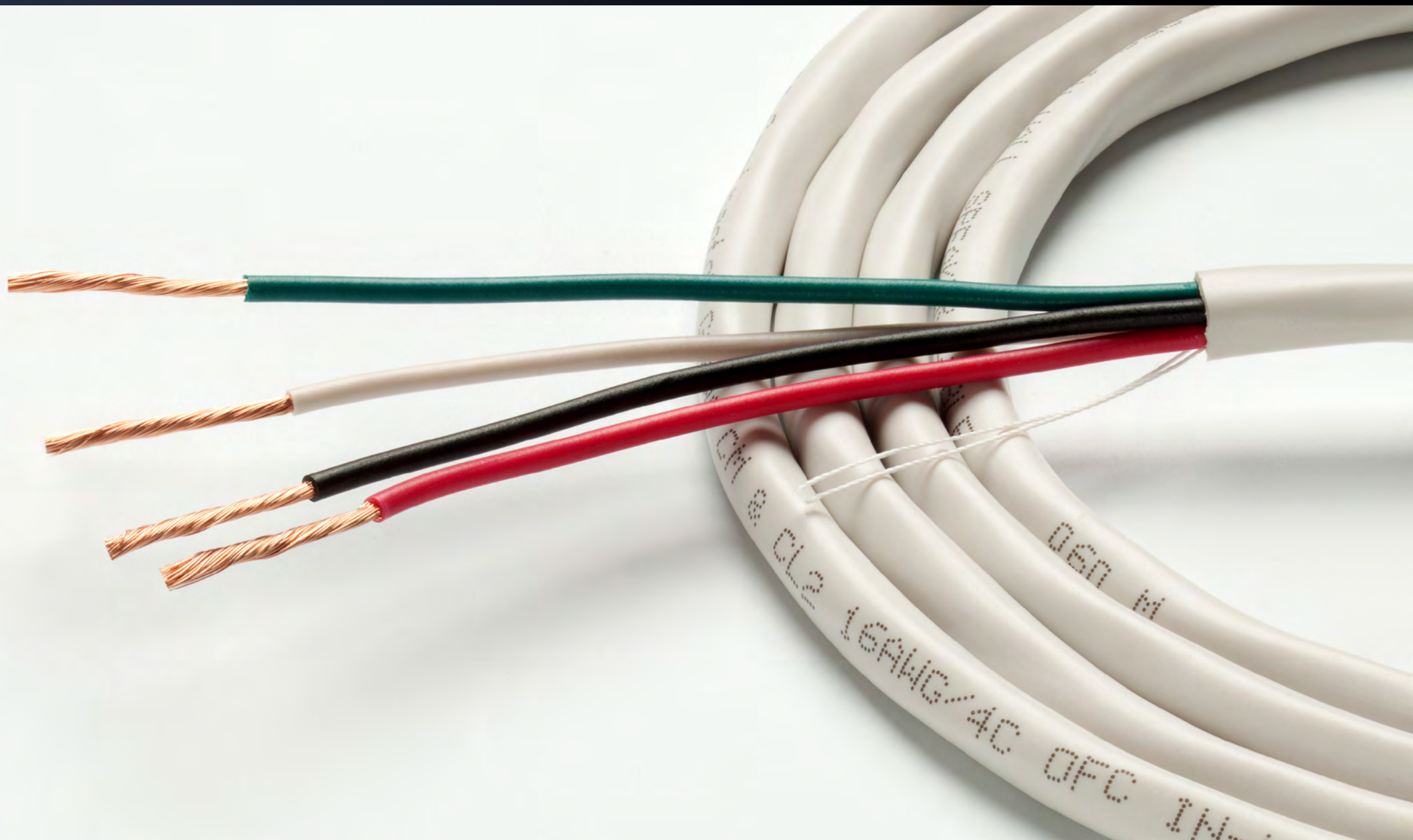
**TBS-100 v.2**

COMMERCIAL AUDIO

	TCW-66RV	TCW-65RV	TCW-64RV	TCW-55V	TOW-65V	TBS-100 v.2
<b>Speaker Type</b>	100V In-wall / In-ceiling Speaker	100V In-wall / In-ceiling Speaker	100V In-wall / In-ceiling Speaker	100V In-wall / In-ceiling Speaker	100V On-wall Speaker	100V Ball Speaker
<b>Drivers Configuration</b>	Bass / Midrange 165 mm (6.5")	Bass / Midrange 133 mm (5.25")	Bass / Midrange 102 mm (4")	Tweeter 13 mm (0.5")  Bass / Midrange 133 mm (5.25")	Bass / Midrange 165 mm (6.5")	Tweeter 13 mm (1/2")  Bass / Midrange 165 mm (6.5")
<b>Power</b>	100V: 10W, 6W	100V: 6W, 3W	100V: 6W, 3W	100V: 6W, 3W	100V: 6W, 3W	100V: 30W, 20W, 10W, 5W
<b>Impedance</b>	8Ω	8Ω	8Ω	8Ω	8Ω	8Ω
<b>Frequency Response</b>	120Hz - 15kHz	150 Hz - 15kHz	150Hz - 15kHz	150Hz - 15kHz	120Hz - 15kHz	100Hz - 20kHz
<b>Dimensions (H x W)</b>	22 x 10 cm	19 x 10.2 cm	13.5 x 8.1 cm	26 x 19.5 x 8 cm	26 x 18 x 12 cm	21 cm
<b>Minimum Mounting Depth</b>	97 mm	120 mm	120 mm	77 mm	97 mm	-
<b>Cutout Dimensions (Dia)</b>	190 mm	175 mm	120 mm	230 x 170 mm	-	-
<b>Net Weight</b>	1 kg / pc	0.92 kg / pc	0.6 kg / pc	1.9 kg / pc	1.2 kg / pc	2.06 kg / pc
<b>Finishes</b>	White, Paintable (with grill on, excl. TOW-65V, TBS-100)					



# CABLES



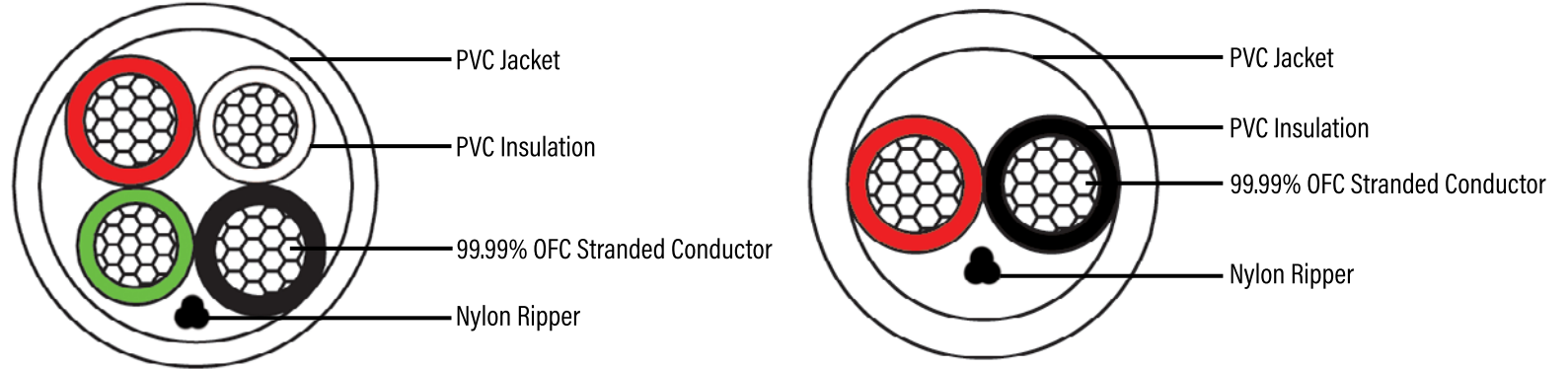
# TCL series

## TCL Series High-Performance 99.99% OFC Contractor Grade CM, CL2 IN-WALL SPEAKER CABLES

The TCL in-wall speaker cables are designed for use in demanding installations both for hi-fi, home theatre and background music applications. Multi-stranded ultra-high purity 99.99% Oxygen Free Copper wiring offers very transparent and natural sound in higher and mid frequencies as well as dynamic and extended bass.

Easy-to-handle pull-out box (installer's friendly packaging), sequentially numbered length per each meter and easy-to-pull White PVC jacket - everything to make a custom integrator job easy and pleasant.

TAGA Harmony offers top build quality Audio-Video cables with superb performance dedicated for demanding customers and installers. Although quality of our cables is high our prices are not! - now everybody can enjoy the best sound!



CM/CL-2 Rated, UL / CPR Approved
4 conductors x 2 mm [14AWG] (TCL-414W) or 4 x 1.7 mm [16AWG] (TCL-416W)
2 conductors x 2 mm [14AWG] (TCL-214W) or 2 x 1.7 mm [16AWG] (TCL-216W)
Multi-stranded, ultra-high purity 99.99% Oxygen Free Copper wires
Low friction insulation for conductors (Black & Red) Low friction, easy-to-pull outer PVC jacket (White)
Sequentially numbered per meter



## TAGA Harmony

Al. Jerozolimskie 333A  
05-816 Reguly/Warsaw  
Poland

Phone: +48-22-353-14-14  
Email: Sales@TagaHarmony.com

Distributor / Dealer

[www.TagaHarmony.com](http://www.TagaHarmony.com)

Find **TagaHarmony** on social media



We reserve the right to amend details of the specifications or designs without notice in line with technical developments.  
All other brands and product names are trademark of their respective owners.  
**Bluetooth®** is a registered trademark of Bluetooth SIG, Inc.