

REPLACEMENT OF BATTERY

CAUTION: Do not scratch the aluminium frame and plastic grille.
Stop any playback and turn off the DALI KATCH.



REPLACEMENT OF BATTERY

1

Place the unit on a soft surface.



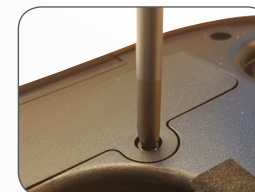
2

Unmount the grille on the front side to get access to the battery lid. Follow steps 1-7 in Replacement of grille.



3

Unscrew the two screws in the battery cover.



+ PZ 1



IN ADMIRATION OF MUSIC



REPLACEMENT OF BATTERY

4

Remove the battery cover.



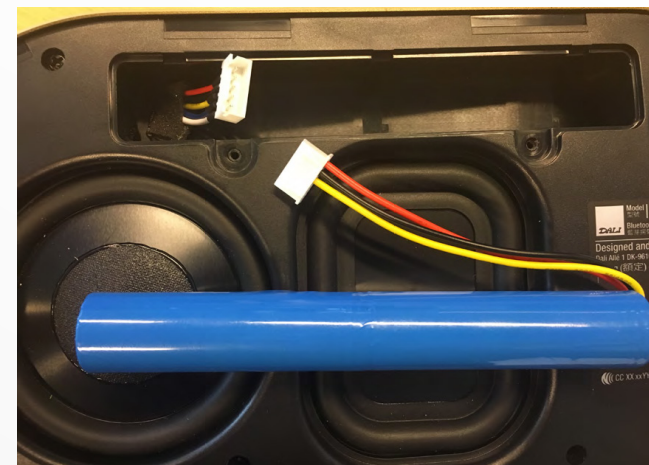
5

Carefully take out the battery to access the battery connector.



6

Separate the battery connector.
DON'T PULL AT THE WIRES.



IN ADMIRATION OF MUSIC



REPLACEMENT OF BATTERY

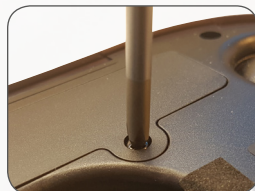
7

Connect and place replacement battery.



8-9

Mount the battery cover.



Mount the grille.
Follow steps 8-9 in replacement of grille.



IN ADMIRATION OF MUSIC

